

Setup LaTeX Environment on Windows

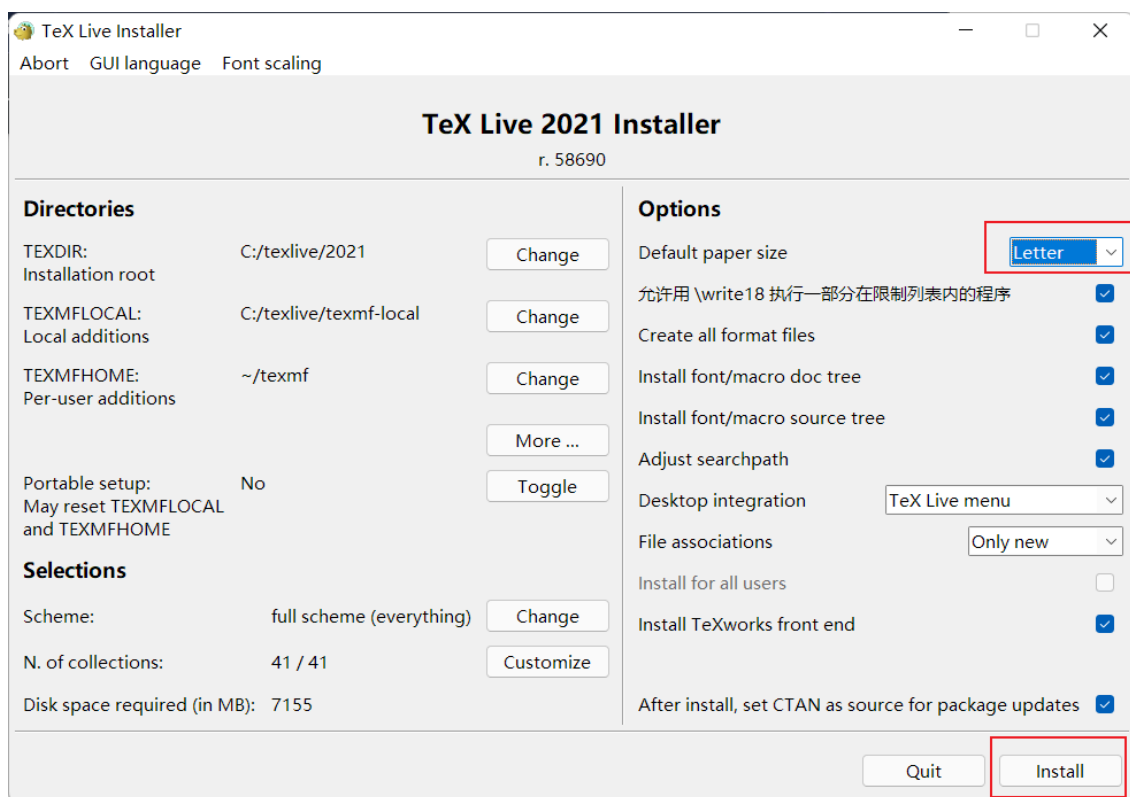
5/3/2022 0:44

- **Tools:**

- Tex Live for windows, using the DVD to install, the latest version is texlive2021 (<https://tug.org/texlive/acquire-iso.html>) **Note: this link will automatically choose the nearest mirror**
- Sublime 3 (<https://www.sublimetext.com/>)
- SumatraPDF (<https://www.sumatrapdfreader.org/download-free-pdf-viewer>)
- Daemon tool (Win10 above has built-in tools.)

- **Steps:**

1. Load the .iso file, and start install. (Click the `Advanced`, set like following.)



Note: It takes a while, installation end with "Welcom to Tex Live!" message.

2. Install **Sublime 3**, then:

- press `Ctrl+Shift+P` in the software.
- type `install package control` and then `install package` to install LaTeXTools.
- Preferences->Package Setting->LaTeXTools->Settings-User, this will generate a user setting `LaTeXTools.sublime-settings` from default. Add the following code in the file:

```
1 // In Platform settings
2     "windows":{
3         ...
4         "texpath": "your_path_to_tex_win32;$PATH",
5         // e.g. my path is "E:/texlive/2021/bin/win32"
6         "distro": "texlive",
```

```
7     "sumatra": "your_path_to_SumatraPDF.exe",
8         // e.g. my path is "E:/Program Files/SumatraPDF/SumatraPDF.exe"
9         ...
10    },
11
12    // In General settings
13    ...
14    "keep_focus": false,
15    ...
```

3. Add SumatraPDF to PATH (**IMPORTANT!**)
 - Add the folder of SumatraPDF in to system path variable.
4. Set inverse search in SumatraPDF. Different from the previous version, this set need to use command line:

```
1 user> SumatraPDF -inverse-search "\"your_path_to_sublime_text.exe\"
  \"%f\" -n%l"
2 // e.g. my path is "E:\Program Files\Sublime Text\sublime_text.exe"
3 // note: '\' not '/'
```

5. Restart your computer.

- Press "Ctrl+B" to build!

---->Have fun!

---->5/3/2022

---->Updated by Bo Zhang